

# Containerized BESS

Model: ZGE-CI-Z-5-10

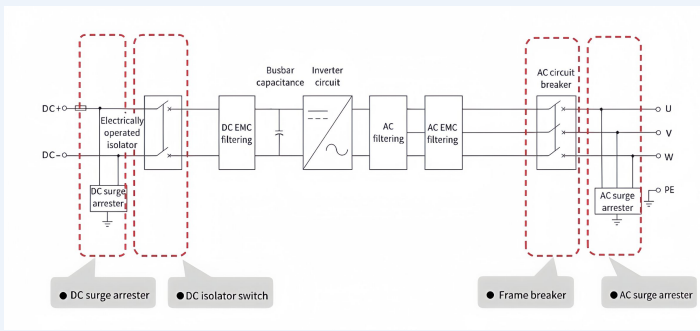


PCS+Boosting System

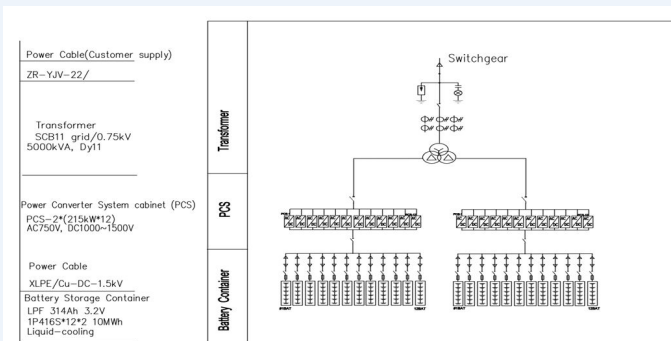


Battery System

## Energy Storage Converter Circuit Block Diagram



## 5MW/10MWh BESS Single-line Diagram



## Features

- LFP, 314Ah cells
- 10 MWh energy capacity
- 5MVA Transformer+ 2\*2.5MW PCS+MV cabinet
- Liquid cooling system for battery system
- Two 20-foot pre-installing battery containers
- Back-up power, peak shaving, micro-grids, energy arbitration applications

# Product Parameters

## 5MWh Battery System

### General

Battery type	LFP cell, 314Ah
Configuration	12*(4*1P104S)
Cooling method	Liquid cooling
Operating environment temp.	-25 ~ 55°C
Storage environment temp.	-30~ 60°C
Working altitude	≤2000m
Protection class	IP55
Weight	42 tons
Size(w*d*h)	6058mm*2438mm*2896mm
Color	RAL7035

### Electrical

Rated energy	5015.9616kWh
Rated voltage	1331.2Vd.c.
Voltage range	1164.8~1476.8Vd.c.
Communication method	CAN, RS485, TCP/IP

### Certification

UN3536, IEC62619, EN61000, EN62477, IEC63056, IEC 62933-5-2

**Remarks: The 10MWh battery system contains two sets of identical 5MWh battery system.**

## 2.5MW PCS

### General

Operating temp.	-20 ~60°C (de-rating over 50°C)
Protection class	IP54
Cooling method	Air cooling
Protection class	IP66
Working altitude	≤4000m (>3000m derating)
Humidity	0~95% (non condensing)

### Battery side

Max battery voltage	1500Vd.c.
Operating voltage range	1100~1500 Vd.c.
Rated voltage	1331.2Vd.c.
Max continuous discharging/charging current	2388Ad.c.

### Grid side

Rated voltage	3~PE 750 Va.c.
Rated frequency	50Hz/60Hz
Rated power	2580kVA
Power factor (at rated power)	>0.99
Power factor adjustable range	-1~+1
Total current wave form distortion rate	<3 % (under rated power conditions)

### Certification

IEC EN 62477-1, EN IEC 61000-6-2&4, EN 50549-1&2, CEI 0-16

## 5 MVA Transformer

Rated frequency	50Hz/60Hz
Rated power	5000kVA
Rated voltage	Grid/0.75KV
Ambient temp.	-25 ~ 40°C